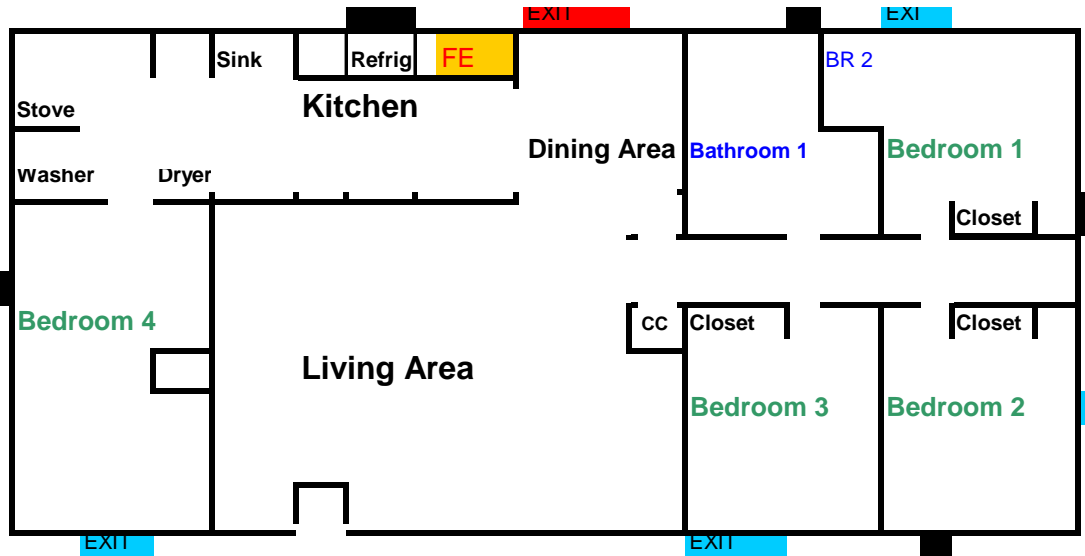


# ***Facility Name***

## ***EVACUATION PLAN***

Address  
Phone Number



**FE - FIRE EXTINGUISHER**

**PRIMARY EXITS :: out the Front and Back Door**

**SECONDARY EXITS :: out the windows that are clearly marked emergency exit**

**ASSEMBLY POINT :: Front Yard**

### EMERGENCY PHONE NUMBERS

POLIC	911
FIRE	911
POISON CNTRL	1-800-764-7661

In the event of an emergency all residents will be taken to  
Address?? in Dallas

Red denotes the primary fire exits  
Blue denotes the secondary fire exits  
Black denotes blocked windows  
HWH - Hot Water Heater  
F - Furnace  
CC - Coat Closet